



“慧博资讯”专业的投资研究大数据分享平台

点击进入  <http://www.hibor.com.cn>



“慧博资讯”专业的投资研究大数据分享平台

点击进入  <http://www.hibor.com.cn>

[Redacted text]

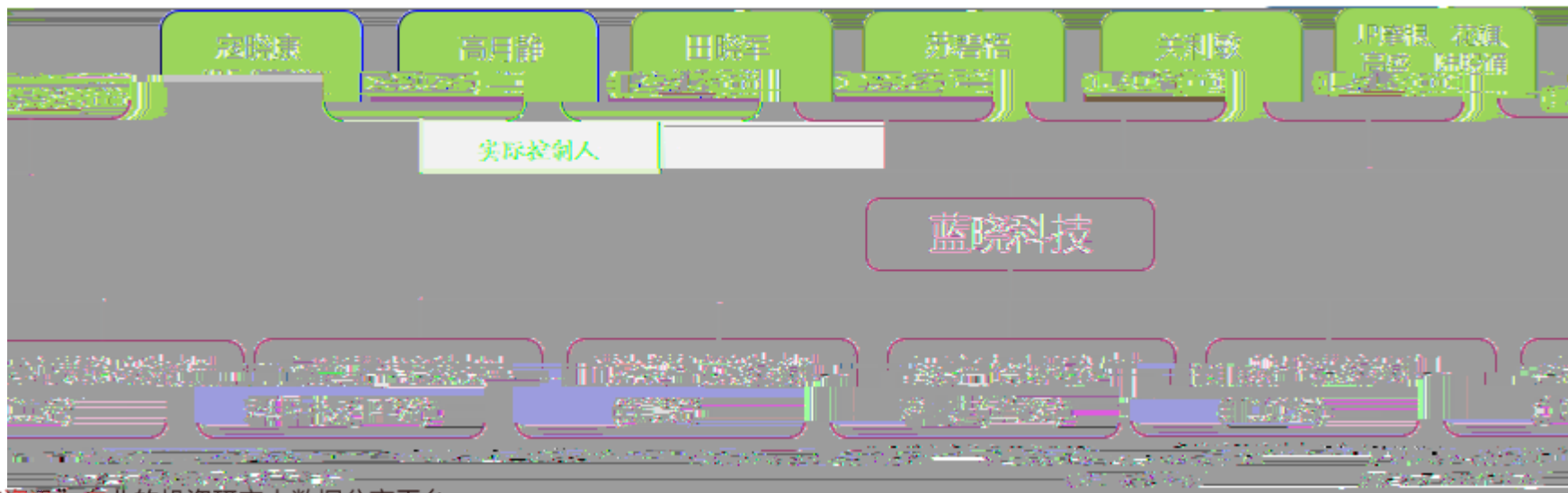
[Redacted text]

[Redacted text]

[Redacted text]

38.98%

ESE



材料制造技术
Polymer Synthesis Technology

- 精装设备
Precision Equipment
- 连续流文装置
Continuous Flow System
- 多路阀装置
Multi-ported Valve System
- 整线建设
Production Line
- 管理运营
Management and Operation

• 离子交换树脂 • 固相合成载体

“慧博资讯”专业的投资研究大数据分享平台

点击进入  <http://www.hibor.com.cn>



“慧博资讯”专业的投资研究大数据分享平台

点击进入 <http://www.hibor.com.cn>



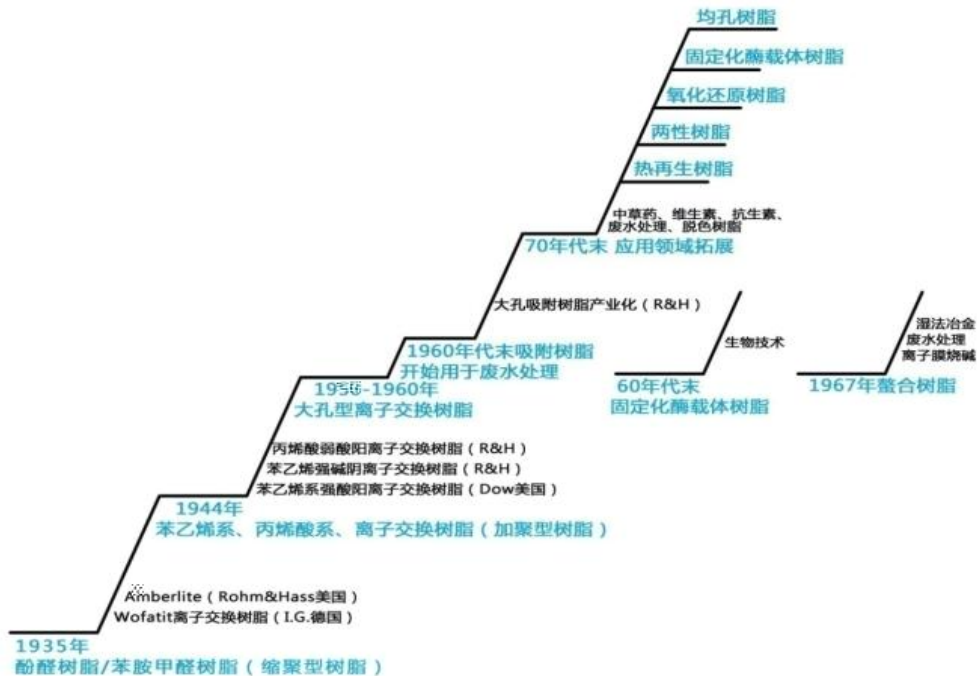
	1969	ESE	, 1998-2000	2000-2001
	1967		1990	
	1969		1991	2005
	, 2011	001		
	1963		1986	
	, 2005			
	1967		1990	3513 , , 2001
	1979			2009 7
	1970		1993	, 2004

“慧博资讯”专业的投资研究大数据分享平台

点击进入 <http://www.hibor.com.cn>



Ø





“慧博资讯”专业的投资研究大数据分享平台

点击进入  <http://www.hibor.com.cn>

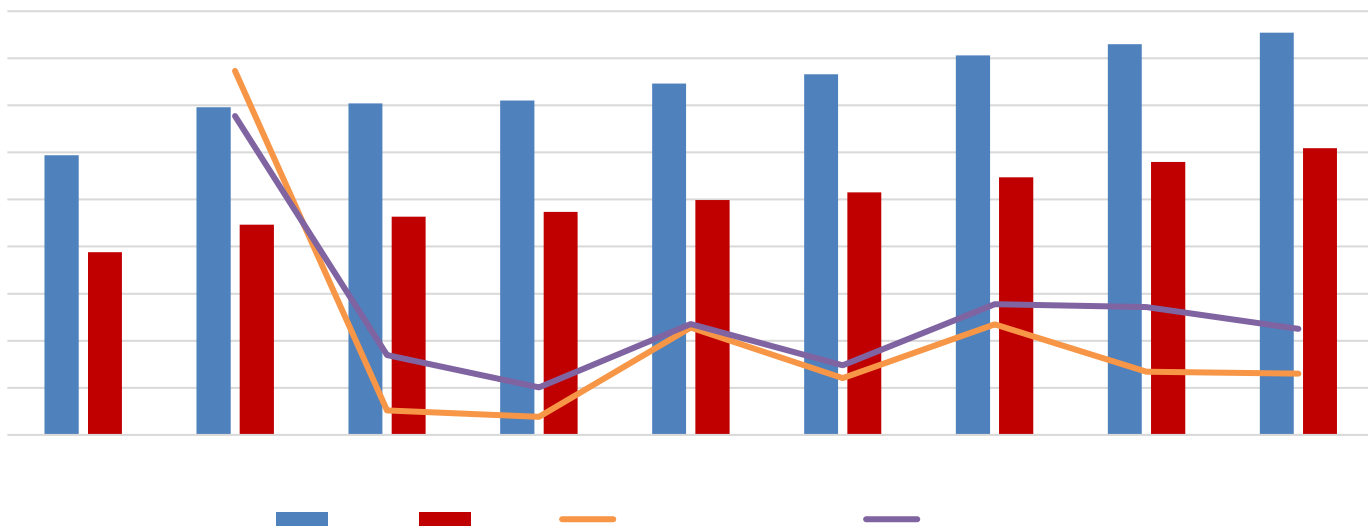
1			
2			
3			
4			
5		---	
6			

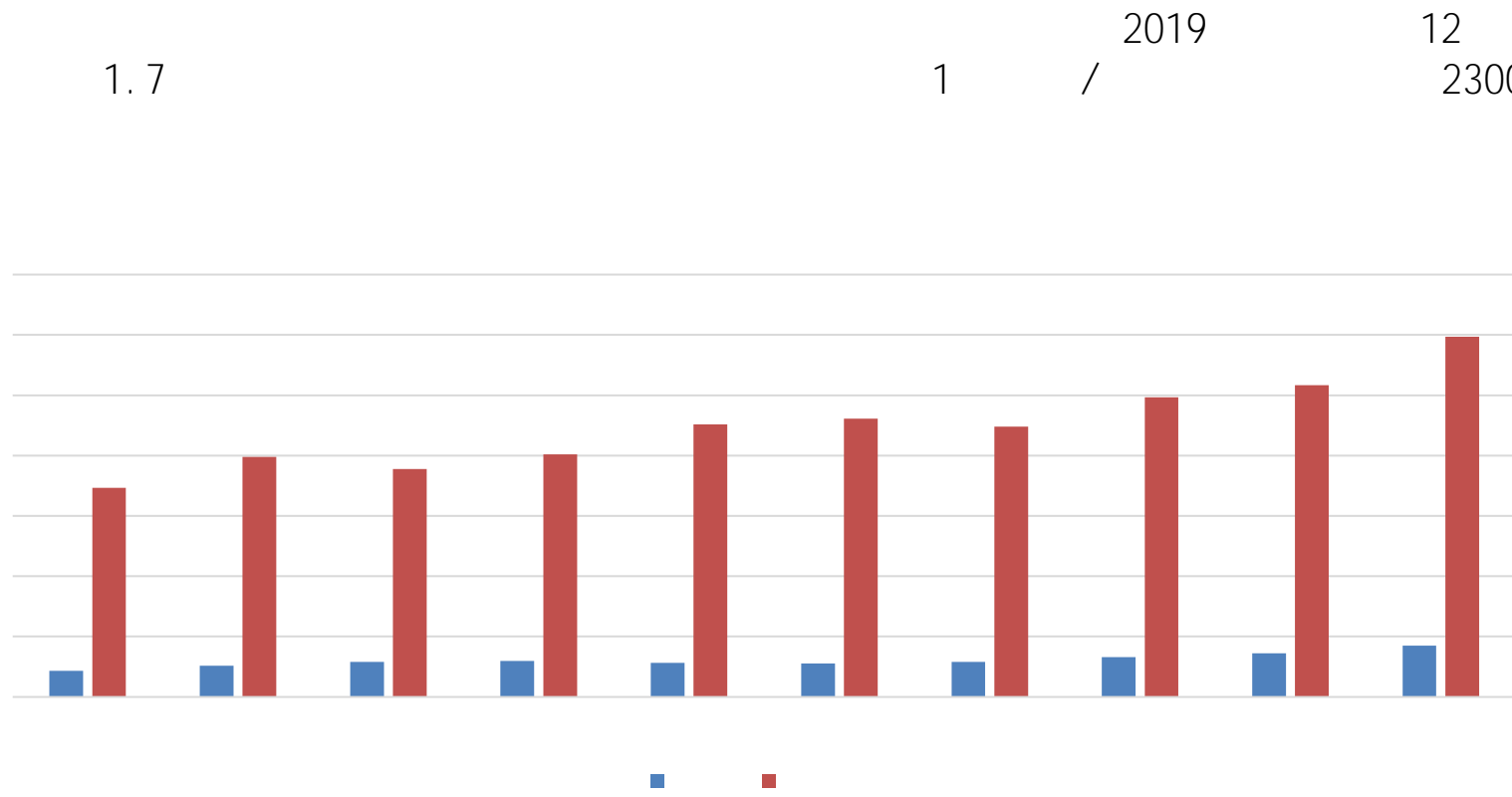
		1.2.5.6

“慧博资讯”专业的投资研究大数据分享平台

点击进入  <http://www.hibor.com.cn>

2018 5% 42.7 2.9% 30.44





[Redacted text]

[Redacted text]

[Redacted text]

[Redacted text]

2020

4

3-5

2020

21612.14

26.11%

20373.8

30.81%

	/		
	6000	2019	17137.73

2020
2.93
6000

126.25%

0.87

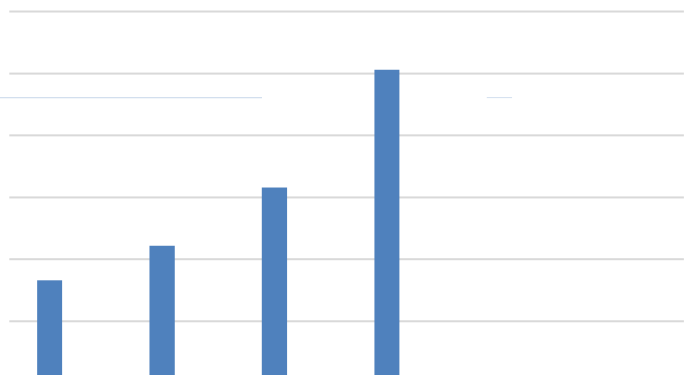
229.46%

2021Q1,
2021Q1

2021Q1

49.59%

29.02%





12.33%

2020

2.6

2020

92%

5.91

1.63



2017

2020

2021Q1

2021Q1

5334.44

426.75%

2021Q1



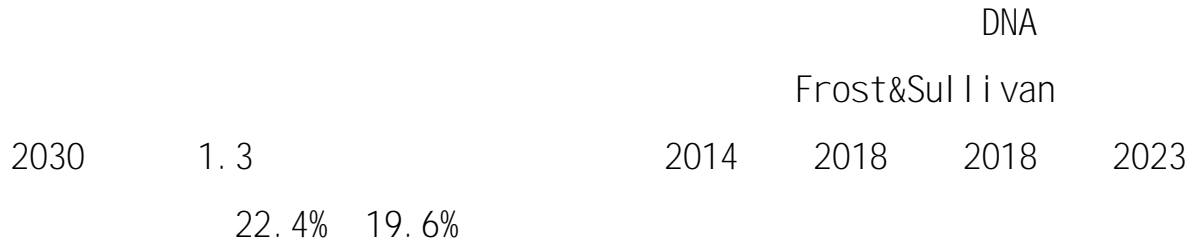
2020 33 LCE

2025 108.4 LCE 25%

82%

65%

∅



2018

4688

13.7% Technavi o

2018~2022

8%

2022

41.7



237	2025	594	MarketsandMarkets	2019	2019	2025	16.5
-----	------	-----	-------------------	------	------	------	------



“慧博资讯”专业的投资研究大数据分享平台

点击进入  <http://www.hibor.com.cn>

MTBE TAME

“慧博资讯”专业的投资研究大数据分享平台

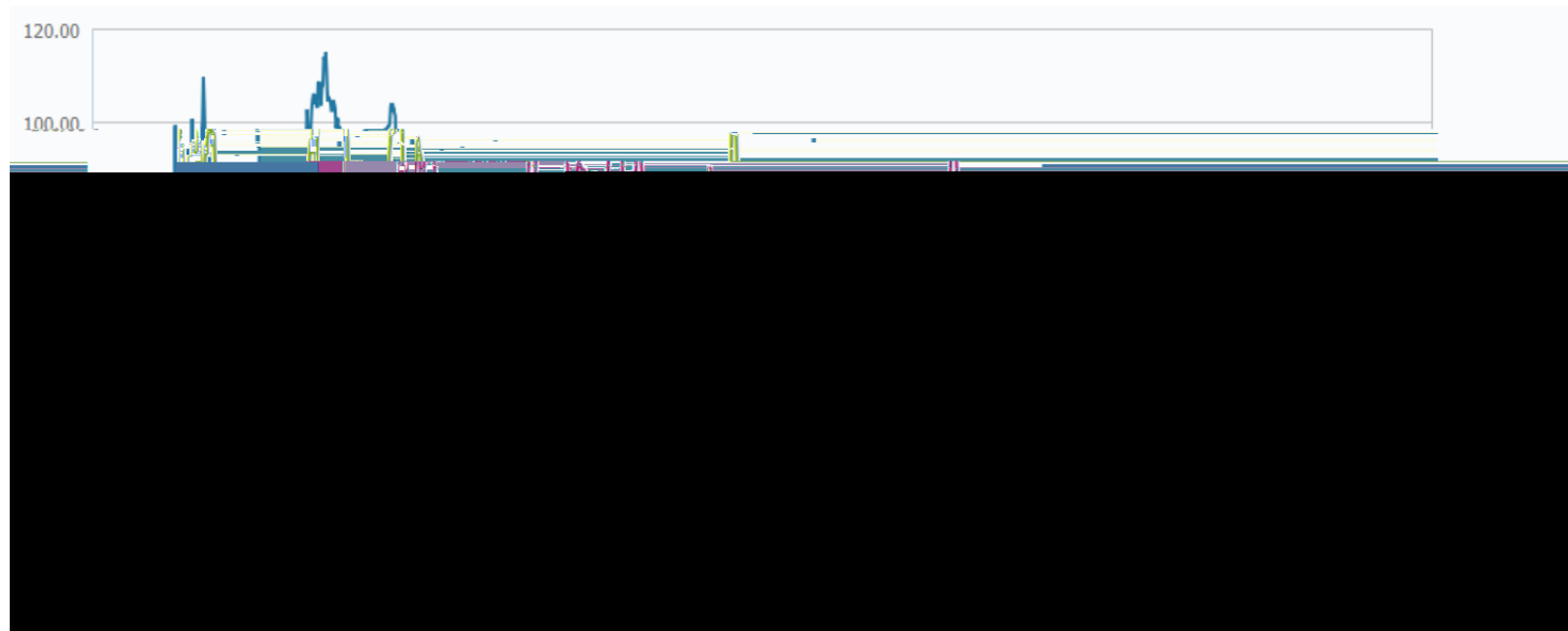
点击进入  <http://www.hibor.com.cn>



PE(TTM) 56

PE(TTM) 41

PE(TTM)



2021

wi nd

PE 58

PE(TTM)

“慧博资讯”专业的投资研究大数据分享平台

点击进入  <http://www.hibor.com.cn>

“慧博资讯”专业的投资研究大数据分享平台

点击进入  <http://www.hibor.com.cn>



		13910596682	wangj l@tpyzq.com
		18519233712	chengxy@tpyzq.com
		13581759033	mengchao@tpyzq.com
		13701050353	wei kj@tpyzq.com
		13564966111	chenhm@tpyzq.com
		15999569845	l i angj p@tpyzq.com
		18616086730	yangj i nga@tpyzq.com
		18717767929	qi nj j@tpyzq.com
		17321189545	wangyq@tpyzq.com
		18621268712	ci xc@tpyzq.com
		18758280661	guoyu@tpyzq.com
		17305260759	xul m@tpyzq.com
		13923766888	zhangqp@tpyzq.com
		18565481133	zhafl @tpyzq.com
		13554982912	zhangzy@tpyzq.com
		18589058561	zhangj i ngwen@tpyzq.com

“慧博资讯”专业的投资研究大数据分享平台

点击进入  <http://www.hibor.com.cn>